



INSTRUMENT CARE & SURGICAL SUPPLY

Products



**CLEAN
READY
TO USE**

CLEANED BY *R. Leather*

DATE 10/2/2024

ENDOSCOPE CLEANED BY _____

DATE CLEANED _____

SCOPE SERIAL # _____

EXPIRATION DATE _____





Committed To Our Customers...

Dear Customer,

The Scanlan family has specialized in the design and manufacture of the world's finest surgical instrumentation and single-use products since 1921. Now in our fourth generation, our family continues its dedication to providing you with the best surgical products available in the world. This brochure is a collection of our precision products, all designed specifically to address your needs within the O.R. and S.P.D.

Our goal is to continuously enhance our designs to serve you, your hospital and ultimately, your patients. Thank you for your continued support and demand for the finest surgical products.

Sincerely,

Timothy M. Scanlan
President and Chief Executive Officer

Russell T. Scanlan
Chief Operating Officer



Joseph
Scanlan

Russell
Scanlan

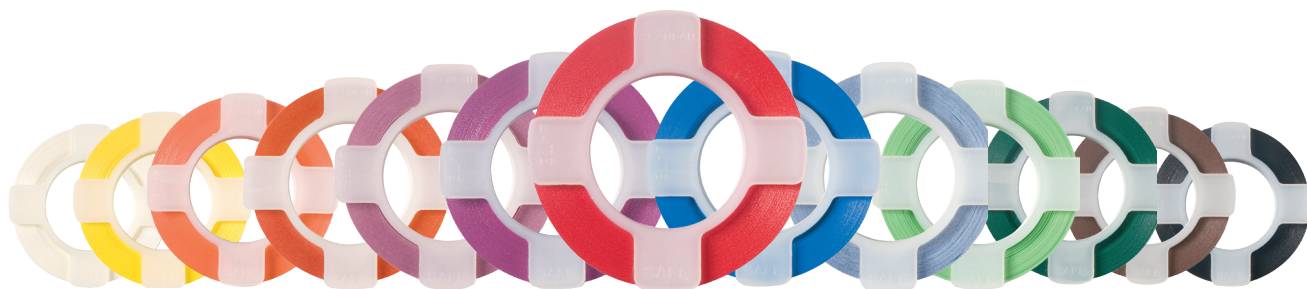
Tim
Scanlan

Adam
Scanlan

Chenoa
Scanlan

SURG-I-BAND®

Color Coding



Original Surg-I-Band® (1/4") and narrow Surg-I-Band® (1/8") color coding, available in 14 bright colors, offers a multitude of color coding combinations to identify instruments by surgeon, set, specialty and suite. In addition, Surg-I-Band® color coding is long lasting – providing greater value by saving time and labor. Not made with natural rubber latex. Tested for steam, ETO and Immediate Use Steam Sterilization (IUSS).

1/4" Original			1/8" Narrow		
Cat. No.	Description		Cat. No.	Description	
1001-64	Red		1001-630	Red	
1001-65	Yellow		1001-631	Yellow	
1001-66	Orange		1001-632	Orange	
1001-67	Blue		1001-633	Blue	
1001-68	Green		1001-634	Green	
1001-69	Brown		1001-635	Brown	
1001-70	White		1001-636	White	
1001-71	Black		1001-637	Black	
1001-94	Glo-Orange		1001-638	Glo-Orange	
1001-95	Purple		1001-639	Purple	
1001-96	Lime Green		1001-640	Lime Green	
1001-97	Grey		1001-641	Grey	
1001-98	Pink		1001-642	Pink	
1001-99	Light Blue		1001-643	Light Blue	



SURG-I-BAND®

Color Coding Data Matrix Barcode Regular and Censitrac™ Compatible

Offering Precise Instrument / Device Tracking

SCANLAN® Surg-I-Band® Data Matrix offers hospitals an excellent system to organize and track surgical instrumentation and devices. Combining the benefits of SCANLAN® Surg-I-Band® color coding with the technology of bar coding, SCANLAN® Surg-I-Band® Data Matrix provides a fast, easy and precise organizational system.

Advantages Include:

- Economy** – Each spool contains 200 unique data matrix barcodes
- **14 colors** – For fast and easy identification
- **1/4" width**
- **Safety** – Clinically tested for steam, gas and flash sterilization
- **Trouble Free** – Easy application and removal without damaging instrument
- **Versatility** – Can be used on most sizes and designs of instruments
- Compatible with instrument tracking software and high-density data matrix ECC 200 scanners
- May be used in combination with Surg-I-Band® Dispenser, Remover and Carousel



Description		Spools	Pre-Cut Assorted Sizes Labels
Red		1001-1098	1001-1112
Yellow		1001-1099	1001-1113
Orange		1001-1100	1001-1114
Blue		1001-1101	1001-1115
Green		1001-1102	1001-1116
Brown		1001-1103	1001-1117
White		1001-1104	1001-1118
Black		1001-1105	1001-1119
Glo-Orange		1001-1106	1001-1120
Purple		1001-1107	1001-1121
Lime Green		1001-1108	1001-1122
Grey		1001-1109	1001-1123
Pink		1001-1110	1001-1124
Light Blue		1001-1111	1001-1125

Available in:

- **Spools** – contains 200 unique data matrix barcodes
- **Pre-Cut Assorted Sizes Labels**
Designed for tracking and barcoding larger diameter instruments.
Pre-cut label sheet (8 1/2" x 11") - 1/4" width, 132 barcodes per sheet
 - 72 each of 1.75"
 - 27 each of 3"
 - 26 each of 4"
 - 7 each of 5"



SURG-I-BAND®

Designs On Spools

- **40 designs** – numbers, symbols and abbreviations
- **Multiple colors**
- **Durable** – resistant to flaking, chipping, peeling and cracking through multiple sterilization cycles
- **Sterilizable** – Tested for steam, ETO and Immediate Use Steam Sterilization (IUSS)
- **1/4" Width**
- **Not made with natural rubber latex**



Red Designs

Cat. No.	Description	Design
1001-1000	Zero	00000000
1001-1001	One	1111111111
1001-1002	Two	22222222
1001-1003	Three	33333333
1001-1004	Four	44444444
1001-1005	Five	55555555
1001-1006	Six	66666666
1001-1007	Seven	77777777
1001-1008	Eight	88888888
1001-1009	Nine	99999999
1001-1010	Hearts	♥♥♥♥♥♥♥♥
1001-1011	Bones	☠☠☠☠☠☠☠☠
1001-1012	Crosses	✚✚✚✚✚✚✚✚
1001-1013	Eyes	👁👁👁👁👁👁👁👁

Black Designs

Cat. No.	Description	Design
1001-1014	Zero	00000000
1001-1015	One	1111111111
1001-1016	Two	22222222
1001-1017	Three	33333333
1001-1018	Four	44444444
1001-1019	Five	55555555
1001-1020	Six	66666666
1001-1021	Seven	77777777
1001-1022	Eight	88888888
1001-1023	Nine	99999999
1001-1024	Hearts	♥♥♥♥♥♥♥♥
1001-1025	Bones	☠☠☠☠☠☠☠☠
1001-1026	Crosses	✚✚✚✚✚✚✚✚
1001-1027	Eyes	👁👁👁👁👁👁👁👁

Blue Designs

Cat. No.	Description	Design
1001-1028	OB	OB OB OB OB OB OB OB OB
1001-1029	EYE	EYE EYE EYE EYE EYE EYE EYE EYE
1001-1030	GEN	GEN GEN GEN GEN GEN GEN GEN GEN
1001-1031	GYN	GYN GYN GYN GYN GYN GYN GYN GYN
1001-1032	BAR	BAR BAR BAR BAR BAR BAR BAR BAR
1001-1033	URO	URO URO URO URO URO URO URO URO
1001-1034	NEU	NEU NEU NEU NEU NEU NEU NEU NEU
1001-1035	L&D	L&D L&D L&D L&D L&D L&D L&D L&D
1001-1036	Feet	👣👣👣👣👣👣👣👣
1001-1037	Baby Bottle	🍼🍼🍼🍼🍼🍼🍼🍼
1001-1038	Bones	☠☠☠☠☠☠☠☠
1001-1039	Smiley Faces	😊😊😊😊😊😊😊😊
1001-1040	Hearts	♥♥♥♥♥♥♥♥
1001-1041	Hands	👐👐👐👐👐👐👐👐

Pink Designs

Cat. No.	Description	Design
1001-1042	OB	OB OB OB OB OB OB OB OB
1001-1043	EYE	EYE EYE EYE EYE EYE EYE EYE EYE
1001-1044	GEN	GEN GEN GEN GEN GEN GEN GEN GEN
1001-1045	GYN	GYN GYN GYN GYN GYN GYN GYN GYN
1001-1046	BAR	BAR BAR BAR BAR BAR BAR BAR BAR
1001-1047	URO	URO URO URO URO URO URO URO URO
1001-1048	NEU	NEU NEU NEU NEU NEU NEU NEU NEU
1001-1049	L&D	L&D L&D L&D L&D L&D L&D L&D L&D
1001-1050	Feet	👣👣👣👣👣👣👣👣
1001-1051	Baby Bottle	🍼🍼🍼🍼🍼🍼🍼🍼
1001-1052	Bones	☠☠☠☠☠☠☠☠
1001-1053	Smiley Faces	😊😊😊😊😊😊😊😊
1001-1054	Hearts	♥♥♥♥♥♥♥♥
1001-1055	Hands	👐👐👐👐👐👐👐👐

Green Designs

Cat. No.	Description	Design
1001-1056	ETO	ETO ETO ETO ETO ETO ETO ETO ETO
1001-1057	ENDO	ENDO ENDO ENDO ENDO ENDO ENDO ENDO ENDO
1001-1058	GI	GI GI GI GI GI GI GI GI
1001-1059	CV	CV CV CV CV CV CV CV CV
1001-1060	ER	ER ER ER ER ER ER ER ER
1001-1061	ASC	ASC ASC ASC ASC ASC ASC ASC ASC
1001-1062	CCU	CCU CCU CCU CCU CCU CCU CCU CCU
1001-1063	DEN	DEN DEN DEN DEN DEN DEN DEN DEN
1001-1064	ENT	ENT ENT ENT ENT ENT ENT ENT ENT
1001-1065	ICU	ICU ICU ICU ICU ICU ICU ICU ICU
1001-1066	SPD	SPD SPD SPD SPD SPD SPD SPD SPD
1001-1067	Triangles	▲▲▲▲▲▲▲▲
1001-1068	Circles	●●●●●●●●
1001-1069	Stars	★★ ★★ ★★ ★★ ★★

Purple Designs

Cat. No.	Description	Design
1001-1070	ETO	ETO ETO ETO ETO ETO ETO ETO ETO
1001-1071	ENDO	ENDO ENDO ENDO ENDO ENDO ENDO ENDO ENDO
1001-1072	GI	GI GI GI GI GI GI GI GI
1001-1073	CV	CV CV CV CV CV CV CV CV
1001-1074	ER	ER ER ER ER ER ER ER ER
1001-1075	ASC	ASC ASC ASC ASC ASC ASC ASC ASC
1001-1076	CCU	CCU CCU CCU CCU CCU CCU CCU CCU
1001-1077	DEN	DEN DEN DEN DEN DEN DEN DEN DEN
1001-1078	ENT	ENT ENT ENT ENT ENT ENT ENT ENT
1001-1079	ICU	ICU ICU ICU ICU ICU ICU ICU ICU
1001-1080	SPD	SPD SPD SPD SPD SPD SPD SPD SPD
1001-1081	Triangles	▲▲▲▲▲▲▲▲
1001-1082	Circles	●●●●●●●●
1001-1083	Stars	★ ★★ ★★ ★★ ★★



SURG-I-BAND®

Accessories

SCANLAN®

SURG-I-BAND® Dispenser

- **Easy to use** – Surg-I-Band® color coding spools snap on securely and can be removed quickly
- **Precise cut** – Dispenser eliminates the need for awkward scissors or blades when using Surg-I-Band® color coding
- **Protective cover** - guards against damage to blade and color coding
- **Compact** – provides a small, lightweight design
- **Reusable** – ensuring greater economy



Cat. No.	Description
1001-60	Surg-I-Band® Dispenser (Does not include Surg-I-Band® spools)

SCANLAN®

SURG-I-BAND® Remover

- **Saves time** – allows quick removal of Surg-I-Band® color coding
- **Safe** – eliminates use of razors or other sharp instruments that may damage the surface of instruments or cause injury to personnel
- **Reusable** – removes hundreds of bands



Cat. No.	Description
1001-49	Surg-I-Band® Remover



SURG-I-BAND®

Accessories

SCANLAN®

SURG-I-BAND® Carousel

- **Efficient** – provides fast, easy application of Surg-I-Band® color coding
- **Excellent organization** – holds 12 Surg-I-Band® dispensers
- **Rotating top** – provides easy access to each color
- **Storage** – conveniently holds Scanlan® Tip Guard™ instrument protectors
- **Easy to use** – Surg-I-Band® spools snap on securely and can be removed quickly

Cat. No.	Description
1001-59	Carousel Only
1001-61	Carousel with 12 Dispensers (Does not include Surg-I-Band® spools or Tip-Guard™)



EASY-TAG™

Tracking System

SCANLAN® EASY-TAG™ - Designed to answer the need for a cost-effective, easy, secure method of tracking instruments, trays, equipment & repairs through cleaning, and sterilization processes.

- **Sterilizable** - EO, Steam and Gas Plasma
- **Versatile Surface** - allows placement of pre-printed labels or can be written on both sides of tag
- **No Adhesives** - quick, easy and secure
- **Easy to Apply** - the flexible handle loops around instruments and tray handles
- **Easy to Remove** - Tear-Away™ handle provides easy separation after use
- **Color Coded** - for fast and easy identification
- **Not made with natural rubber latex**
- **250 Tags per spool**

EASY-TAG™

2.5" x 4.75" [63.5 mm x 120.65 mm]

Cat. #	Description
1001-904	Black
1001-905	Red
1001-906	Yellow
1001-907	Blue
1001-908	Green
1001-909	Pink
1001-910	Orange



EASY-TAG™ Small

2.5" x 2.875" [63.5 mm x 73.03 mm]

Cat. #	Description
1001-914	White
1001-915	Red
1001-916	Purple
1001-917	Light Blue
1001-918	Lime Green
1001-919	Hot Pink
1001-920	Orange



EASY-TAG™ Mini

2.25" x .5" [57.15 mm x 12.7 mm]

Cat. #	Description
1001-964	Black 250/Box
1001-965	Red 250/Box
1001-966	Yellow 250/Box
1001-967	Blue 250/Box
1001-968	Green 250/Box
1001-969	Pink 250/Box
1001-970	Orange 250/Box





EASY-TAG™

Tracking System - Pre-Printed

For even more customer convenience, Scanlan offers pre-printed EASY-TAGS™!

EASY-TAG™ Pre-Printed

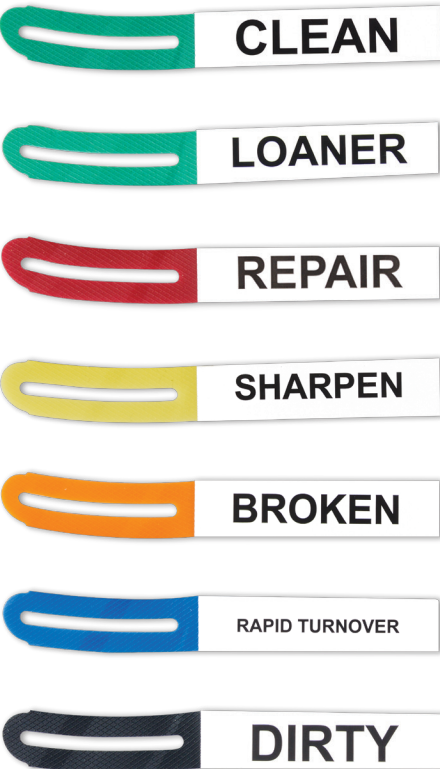
2.5" x 4.75" (63.5 mm x 120.65 mm)

Cat. #	Description	Cat. #	Description
1001-921	Blue, Endoscope Cleaned	1001-927	Red, Biohazard
1001-922	Green, Endoscope Cleaned Month / Date	1001-928	Red, Broken Do Not Use
1001-923	Red, Rapid Turnover	1001-929	Orange, Tray Is Incomplete
1001-924	Red, Repair	1001-930	Red, Endoscope Repair
1001-925	Green, Clean Ready To Use	1001-931	Green, HLD Process Completed
1001-926	Black, Loaner	1001-936	Small, Red, Repair 2.5" x 2.875" (63.5mm x 73.03mm)

EASY-TAG™ Pre-Printed Mini

2.25" x .5" (57.15 mm x 12.7 mm)

Cat. #	Description
1001-971	CLEAN, Green
1001-972	LOANER, Green
1001-973	REPAIR, Red
1001-974	SHARPEN, Yellow
1001-975	BROKEN, Orange
1001-976	RAPID TURNOVER, Blue
1001-977	DIRTY, Black



1001-921

ENDOSCOPE CLEANED BY _____

DATE CLEANED _____

SCOPE SERIAL # _____

EXPIRATION DATE _____

1001-922

JAN • FEB • MAR • APR • MAY • JUN • JUL • AUG • SEP • OCT • NOV • DEC

01 • 02 • 03 • 04 • 05 • 06 • 07
08 • 09 • 10 • 11 • 12 • 13 • 14
15 • 16 • 17 • 18 • 19 • 20 • 21
22 • 23 • 24 • 25 • 26 • 27 • 28
29 • 30 • 31

SCOPE SERIAL #: _____ INITIALS: _____

1001-923

RAPID TURNOVER

ROOM # _____ TIME NEEDED _____

SURGEON _____

1001-924

REPAIR NEEDED

Item Broken: _____ Date: _____

Description of Problem: _____

Initials: _____ Critical: Yes or No

1001-925

CLEAN READY TO USE

CLEANED BY _____ DATE _____

1001-926

LOANER

VENDOR: _____

DATE NEEDED: _____

OF PANS / TRAYS: _____

FOR DR: _____

FOR ROOM: _____

1001-927

BIOHAZARD

1001-928

BROKEN - DO NOT USE

Date: _____ Reported By: _____

Item: _____ Floor/Unit: _____

Describe Damage/Problem: _____

1001-929

THIS TRAY IS INCOMPLETE

MISSING: _____

DATE: _____ INITIALS: _____

1001-930

ENDOSCOPE REPAIR TAG

Blurry Dark Bent

Cloudy Chipped Lens

Light Cord Broken Wrong Light Cord

Fluid Invasion Failed Leak Test

Other _____

Completed By: _____

Serial #: _____

Date: _____

1001-931

High Level Disinfection Process Completed

Ready for Use

Date: _____

Verified By: _____

Serial Number: _____

Exp. Date: _____

1001-936

REPAIR

DATE: _____

STAFF NAME: _____

PROBLEM: _____



EASY-TAG™

Tracking & Tagging System

SCANLAN®

EASY-TAG™ Custom Printing – Available in Multiple Languages

Customize your EASY-TAG™ Tracking System to meet the unique needs within your hospital. Simply define your message, and we do the rest! Your custom print EASY-TAG™ will be developed and printed to your specific needs.

Your custom message, combined with the unique advantages of the EASY-TAG™ Tracking System, offers a powerful combination – providing a cost-effective, secure method of tracking instruments, trays, equipment & repairs through cleaning, decontamination and sterilization processes.



Cat. No.	Description
1001-904C	EASY-TAG™, Black
1001-905C	EASY-TAG™, Red
1001-906C	EASY-TAG™, Yellow
1001-907C	EASY-TAG™, Blue
1001-908C	EASY-TAG™, Green
1001-909C	EASY-TAG™, Pink
1001-910C	EASY-TAG™, Orange

Not made with natural rubber latex
 Spool of 250 Tags
 Custom made at time of order. Firm sale.

SCANLAN®

EASY-TAG™ Small with Custom Printing

Cat. No.	Description
1001-914C	EASY-TAG™, White
1001-915C	EASY-TAG™, Red
1001-916C	EASY-TAG™, Purple
1001-917C	EASY-TAG™, Light Blue
1001-918C	EASY-TAG™, Lime Green
1001-919C	EASY-TAG™, Hot Pink
1001-920C	EASY-TAG™, Orange

Not made with natural rubber latex
 Spool of 250 Tags
 Custom made at time of order. Firm sale.



EASY-TAG™ Plus

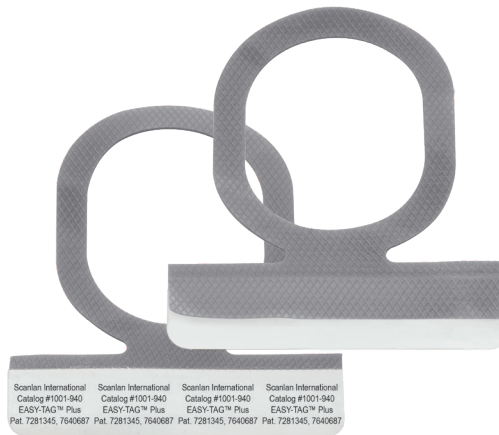
Tracking & Tagging System

Patented flexible/elastic handle technology of the SCANLAN® Easy-Tag™ Tracking System, PLUS an adhesive back allowing the user to attach a machine printout, note, or message.

- **Easy to Apply** - the flexible handle loops over endoscope knobs, around instruments, tray handles and carts.
- **Adhesive Back** - allows placement of a machine print out, note or message to the elastic handle
- **Not made with natural rubber latex**
- **500 tags per spool**

Cat. No.	Description
1001-940	Easy-Tag Plus, Silver*

* Not intended for sterilization



TIP-GUARD™

Instrument Protectors

SCANLAN® TIP-GUARD™ - Ensures safe, cost-effective protection of blade tips and edges for all surgical instrumentation.

- **Economical** – provides long term use and is cost-effective
- **Superior protection** – safeguards delicate tips and edges of surgical instrumentation
- **Tested safe** – clinically tested for steam, flash and EO sterilization (sterility report available upon request)
- **Versatile** – conforms to various shapes and angles
- **Design variety** – available in colored, tinted, clear and vented
- **Radiopaque**
- **Not made with natural rubber latex**



TIP-GUARD™

Instrument Protectors

Colored



1001-89
Black



1001-88
Brown



1001-87
Orange



1001-91
Maroon



1001-90
Yellow



1001-85
Red



1001-86
Green



1001-93
Blue



1001-92
White

1001-84 Variety Pack - 9 assorted color-coded sizes, 100 pieces per package

Tinted



1001-305
Black



1001-304
Brown



1001-303
Orange



1001-307
Maroon



1001-306
Yellow



1001-301
Red



1001-302
Green



1001-309
Blue



1001-308
White

1001-300 Variety Pack - 9 assorted color-coded sizes, 100 pieces per package

Clear



1001-205



1001-204



1001-203



1001-207



1001-206



1001-201



1001-202



1001-209



1001-208

1001-200 Variety Pack - 9 assorted color-coded sizes, 100 pieces per package

Vented



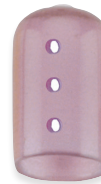
1001-405
Black



1001-404
Brown



1001-403
Orange



1001-407
Maroon



1001-406
Yellow



1001-401
Red



1001-402
Green



1001-409
Blue



1001-408
White

1001-400 Variety Pack - 9 assorted color-coded sizes, 100 pieces per package



Width:	1/8" (3.2 mm)	1/16" (1.6 mm)	1/16" (1.6 mm)	13/32" (10.3 mm)	3/16" (4.8 mm)	1/8" (3.2 mm)	7/64" (2.8 mm)	5/64" (2 mm)	1/16" (1.6 mm)
Length:	1" (25.4 mm)	1" (25.4 mm)	1" (25.4 mm)	3/4" (19 mm)	1" (25.4 mm)	1" (25.4 mm)	3/4" (19 mm)	3/4" (19 mm)	3/4" (19 mm)
Height:	1" (25.4 mm)	5/8" (15.9 mm)	3/8" (9.5 mm)						



Traveler™ Autoclavable Pouch

SCANLAN® Traveler™ Autoclavable Pouch - Designed to provide a fast and reliable method of securing important documents to the outside of containers.

Made of durable material, it is semi-transparent and features a spacious pouch to easily contain large documents. Custom labels may also be applied to the exterior of the pouch to support the identification and tracking of the contents.

- **Sterilizable Vibrant** – Autoclave sterilization tested
- **Sized to Fit** – Holds instrument count sheet with only minimal folding
- **Contents Secure** – Fastener and dual hanging hole ensure contents of pouch do not fall out
- **Easy On** – Adjustable fastener makes it easy to put on and take off, no scissors and no adhesives to leave residue behind
- **Durable** – Strong 3 mil material
- **Large Surface Area** – Perfect for placing a bar code label or to write on
- **Versatile** – Autoclavable pouch is great for housing various documents required to go through the sterilization process with the container
- **Not made with natural rubber latex**



Cat. #	Description
1001-950	Traveler™ Autoclavable Pouch 100 pouches (6.5" x 6.5") and 100 fasteners/box
1001-951	Traveler™ Autoclavable Pouch 100 pouches (6.5" x 6.5") (fasteners not included)

PINCAP® Orthopedic Pin Protectors

SCANLAN® PINCAP® - Unique single-use protective covers for exposed tips of orthopedic pins and wires.

- **Unique design** – provides excellent protection from dermal abrasions, damage to bedding, clothing snags and surgical gloves
- **Size selection** – designed to fit most common pins and wires
- **Double-wall design** – provides additional protection
- **Radiopaque**
- **Not made with natural rubber latex**

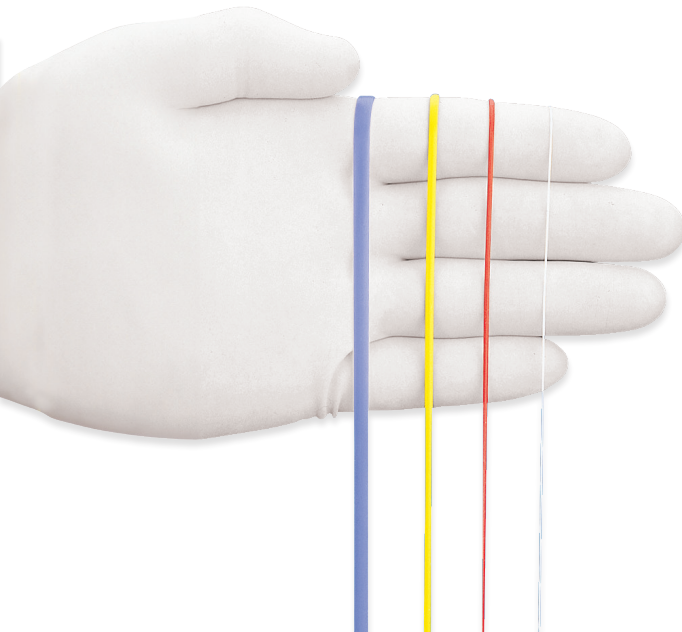
Cat. #	Description
301-0110	White (fits 3 sizes K-wire) 0.028" (0.71mm) 0.035" (0.89mm) 0.045" (1.14mm)

Two per sterile package, 20 packages per box.



Surg-I-Loop™

Silicone Loops



●	Super Maxi (5 x 1.27 mm)
●	Maxi (2.5 x 1.02 mm)
●	Mini (1.5 x .88 mm)
●	Micro (0.5 x .26 mm)

SCANLAN® SURG-I-LOOP® - Designed to assist surgeons in complicated surgical fields by providing retraction, occlusion and identification of arteries, veins, nerves and ureters.

- **Unique design** – provides access to complicated surgical fields
- **Versatile** – can retract and occlude arteries, veins, nerves and ureters
- **Durable** – retains preset tension
- **Radiopaque**
- **Not made with natural rubber latex**

Cat. #	Description	Cat. #	Description
1001-75	Red, Mini	1001-79	Yellow, Mini
1001-76	Red, Maxi	1001-80	Yellow, Maxi
1001-77	Blue, Mini	1001-81	White, Mini
1001-78	Blue, Maxi	1001-81M	White, Micro
1001-78A	Blue, Super Maxi	1001-82	White, Maxi

Length 16.5" [42 cm]

2 per sterile package, 10 packages per box.

Suture-Boot™

Instrument Jaw Covers

SCANLAN® SUTURE-BOOT™ - Designed to facilitate the grasping and tagging of suture.

- **Atraumatic** – firmly holds the finest suture without damage
- **Secure** – will not slip
- **Color coded** – bright yellow and pink for immediate identification
- **Foam cartridge** – designed for fast / easy access
- **Radiopaque**
- **Not made with natural rubber latex**



Cat. #	Description
1001-513	Original Yellow (3 pair per cartridge)
1001-514	Original Yellow (5 pair per cartridge)
1001-515	Large Mini, Pink (3 pair per cartridge)
1001-516	Large Standard, Pink (5 pair per cartridge)





ORDER INFORMATION

Ordering your surgical supply products is easy. Please contact us at:

PHONE: 651.298.0997 • 800.328.9458

FAX: 651.298.0018

EMAIL: surgicalsupplies@scanlangroup.com

MAIL: One Scanlan Plaza • St. Paul, MN 55107

TERMS:

- All shipments are FOB Saint Paul, MN USA
- Approved credit terms are Net 30 from date of invoice
- We accept Visa, Mastercard, American Express and Discover

ONE SCANLAN PLAZA • SAINT PAUL, MINNESOTA 55107 • U.S.A.
800-328-9458 • 651-298-0997 • FAX 651-298-0018 • www.scanlaninternational.com

